

# Sisalex® 514

Vapour and electrical smog barrier



- Reinforced robust vapour barrier
- High  $s_D$  value, more than 1500 m = absolutely airtight

Technical details		Value	Standard
$s_D$ Value		> 1500 m	EN 1931
Weight		225 g/m <sup>2</sup>	EN 1849-2
Tear resistance	longitudinal	950 N/5 cm	EN 12311-2/A
	transverse	450 N/5 cm	
Tear elongation	longitudinal	2 %	EN 12311-2/A
	transverse	5 %	
Resistance to further tearing (nail shaft)	longitudinal	50 N	EN 12310-1
	transverse	80 N	
Fire behaviour		E	EN 13501-1
Waterproofing at 2 kPa		passed	DIN EN 1928
Width of overlap		10 cm	
Straightness		< 75 mm/10 m	EN 1848-2
Temperature resistance		-40 to +80 °C	
Water vapour resistance after ageing		passed	EN 1296, 70 °C

# 10

Jahre Garantie  
Ans Garantie  
Anni Garanzia  
Years Warranty

Security is part of the system at Ampack. We not only cover the cost of the materials, but also the installation and removal costs.

CE  
EN 13984

ISO 9001  
Swiss Research

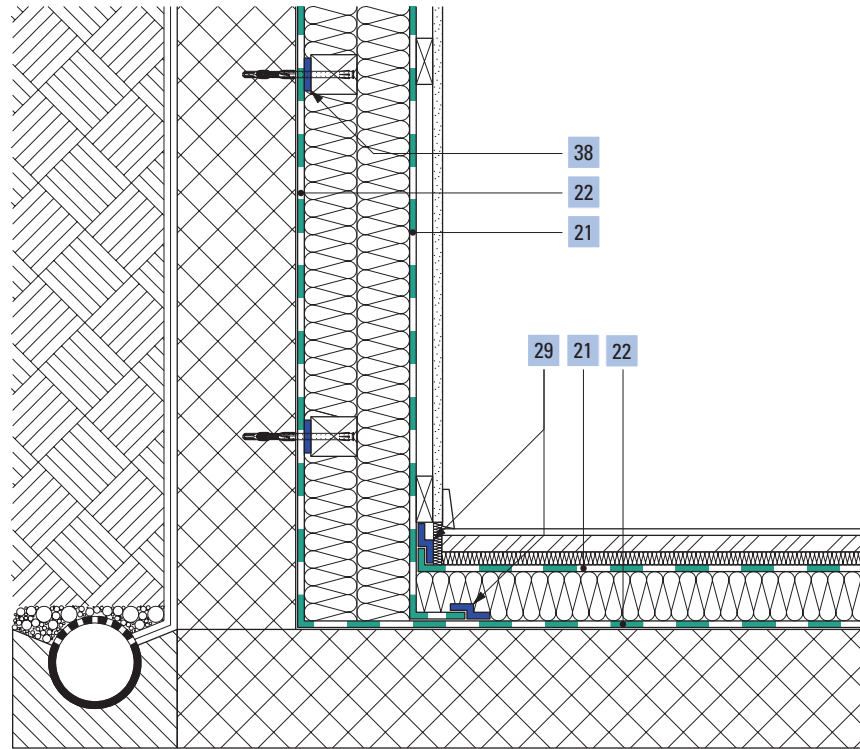
## Delivery forms

Article number	Description	Roll dimensions	Content of pallets
7640115530967	Sisalex® 514	1,5 m × 50 m = 75 m <sup>2</sup>	40 rolls = 3000 m <sup>2</sup>

## Application "Cellar extension with interior insulation and facing shell"

SA 010

21	Vapour barrier <b>Sisalex® 514</b>
22	Vapour barrier <b>Sisalex® 518</b>
29	Adhesive tape <b>Ampacoll® XT</b> , 60 mm
38	Adhesive tape <b>Ampacoll® BK 535</b> , 50 mm



### System accessory



**Ampacoll® BK 530:** Butyl rubber adhesive tape



**Ampacoll® XT 60:** Acrylic adhesive tape



**Ampacoll® RA:** Liquid adhesive



**Ampacoll® Superfix:** Liquid adhesive



### Tips for laying

Lay **Sisalex® 514** on the warm side of the insulation with a 10 cm overlap and tape the joints with **Ampacoll® BK 530**. The printed aluminium side faces you. In rooms that are subject to constant moisture we recommend double bonding with **Ampacoll® BK 530** and **Ampacoll® XT**. Edges must be joined with **Ampacoll® BK 530** and secured with an edge strip. Porous, dusty or rough surfaces must be applied with **Ampacoll® Primax** or **Ampacoll® Airmax**. The

liquid adhesive **Ampacoll® RA** can also be used for edge connections. In cases of high humidity **Ampacoll® Superfix** is recommended. Please note that one side of the material must be diffusive so that the adhesive can set.

#### Note

If a direct bond to a solid surface is required (e.g. an externally insulated concrete wall), this can be done using a low-solvent liquid adhesive

or with **Ampacoll® DT** as a temporary installation aid, until the **Sisalex® 514** vapor barrier is mechanically fixed in place by the final lining.

#### Caution

Never allow **Sisalex® 514** to come in contact with fresh mortar, cement or other alkaline products, as they may attack the aluminum lamination. In such cases use **Sisalex® 518**.

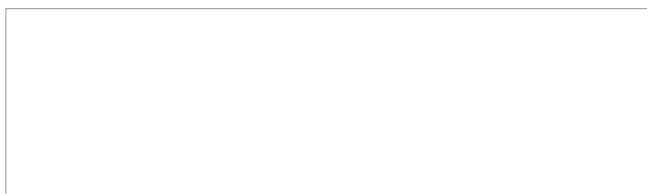


Please observe the recommendations for use and further system products in our adhesives matrix



Further information and detailed documentation at [www.ampack.eu](http://www.ampack.eu)

Sales via specialist dealers



**www.ampack.eu**

Ampack Switzerland: 071 858 38 00

Ampack Austria: 05523 53433

Ampack Germany: 07621 1610264

Ampack France: 04 50 83 70 54

Ampack Italy: 0471 053 475

